



COURTYARD TAIPEI

SEPTEMBER, 2015

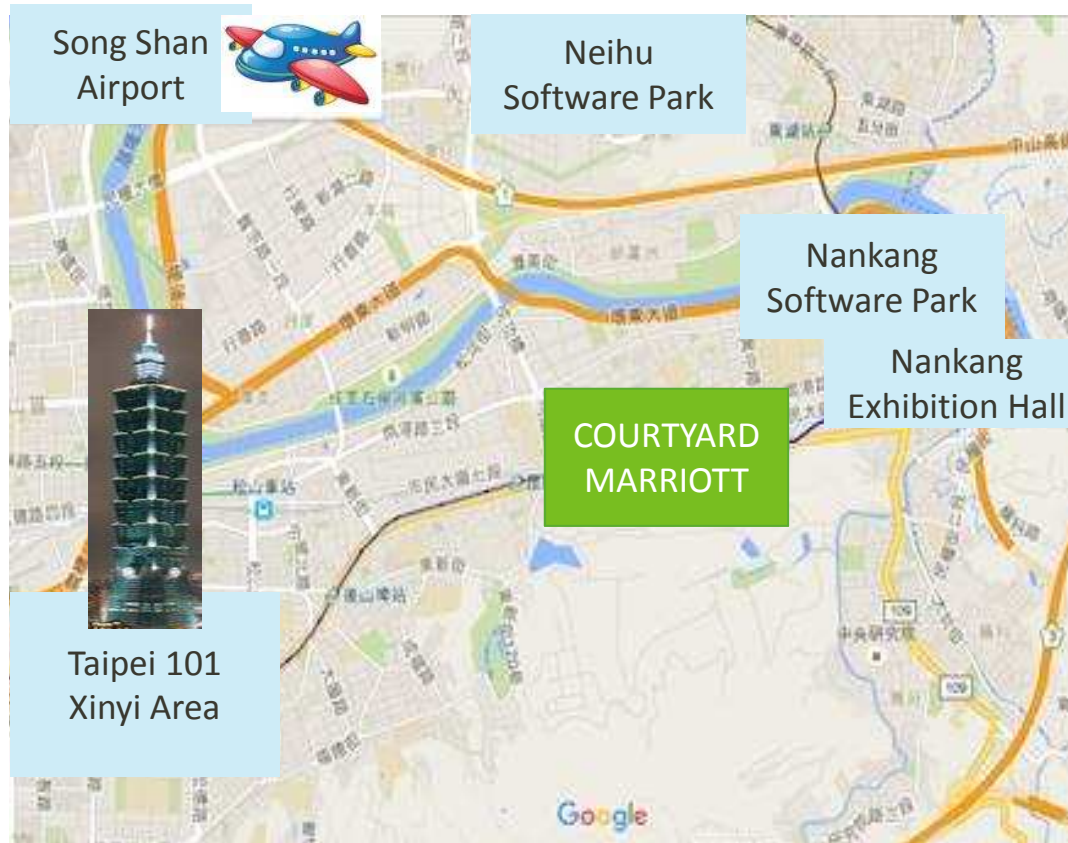


WHAT 'S FUN IN TAIWAN

- ✧ Taiwan, , Republic of China (R.O.C.)
- ✧ Local Language: Mandarin / Taiwanese / Hakka
- ✧ Currency –New Taiwanese Dollars (TWD)
- ✧ Find FUN



LOCATION



✧ AIRPORT

15 mins to Songshan Airport
45 mins to Taoyuan Airport

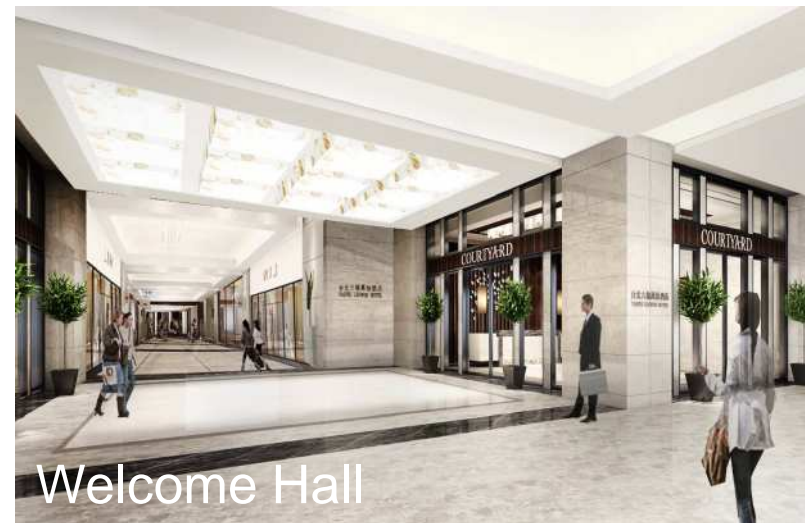
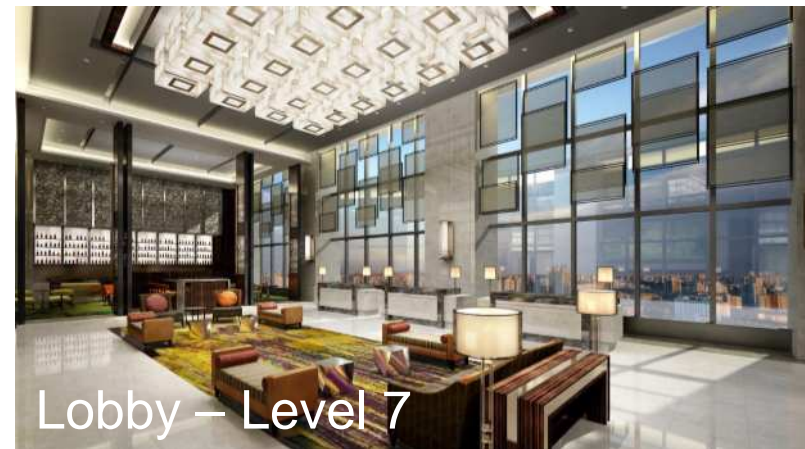
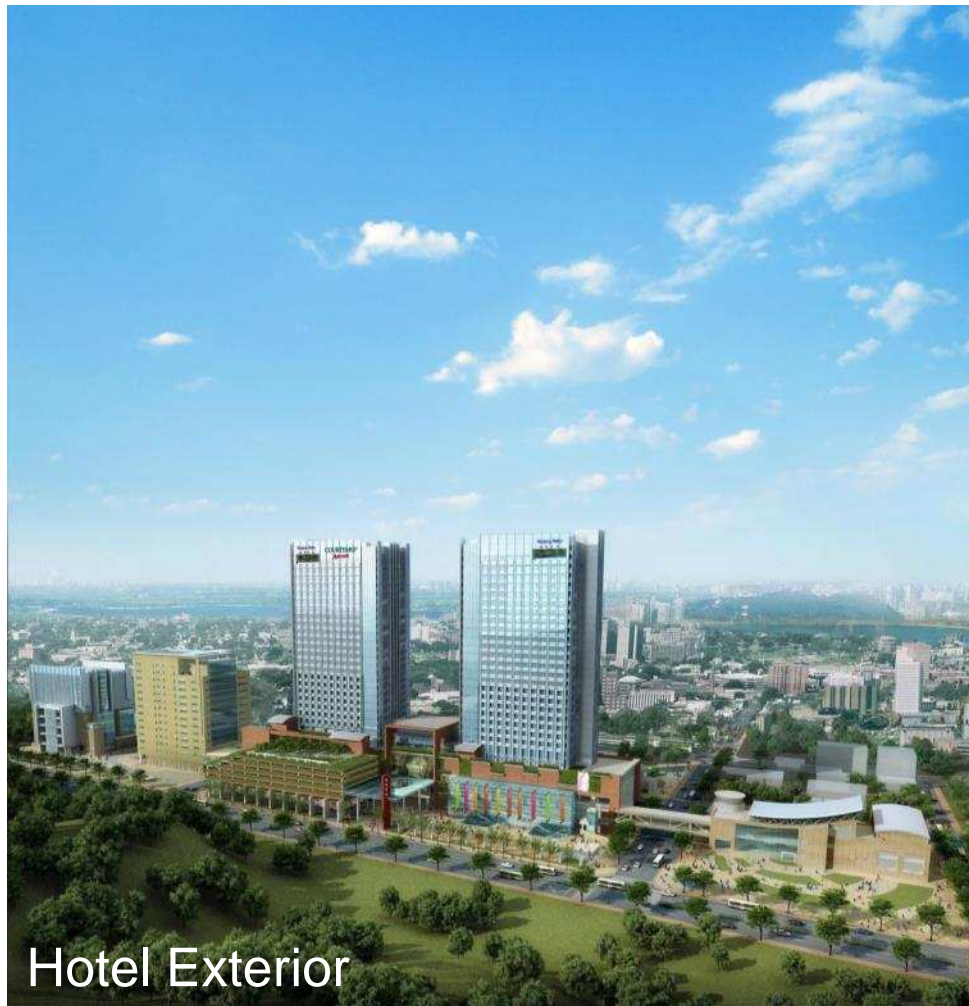
✧ MRT

 Nangang Station

✧ WHERE TO GO

3 mins to Nangang Exhibition Hall
5 mins to Nangang Software Park
10 mins to Taipei 101
15 mins to Neihu Technology Park

HOTEL INTRODUCTION





ACCOMMODATION



ROOM CONFIGURATION

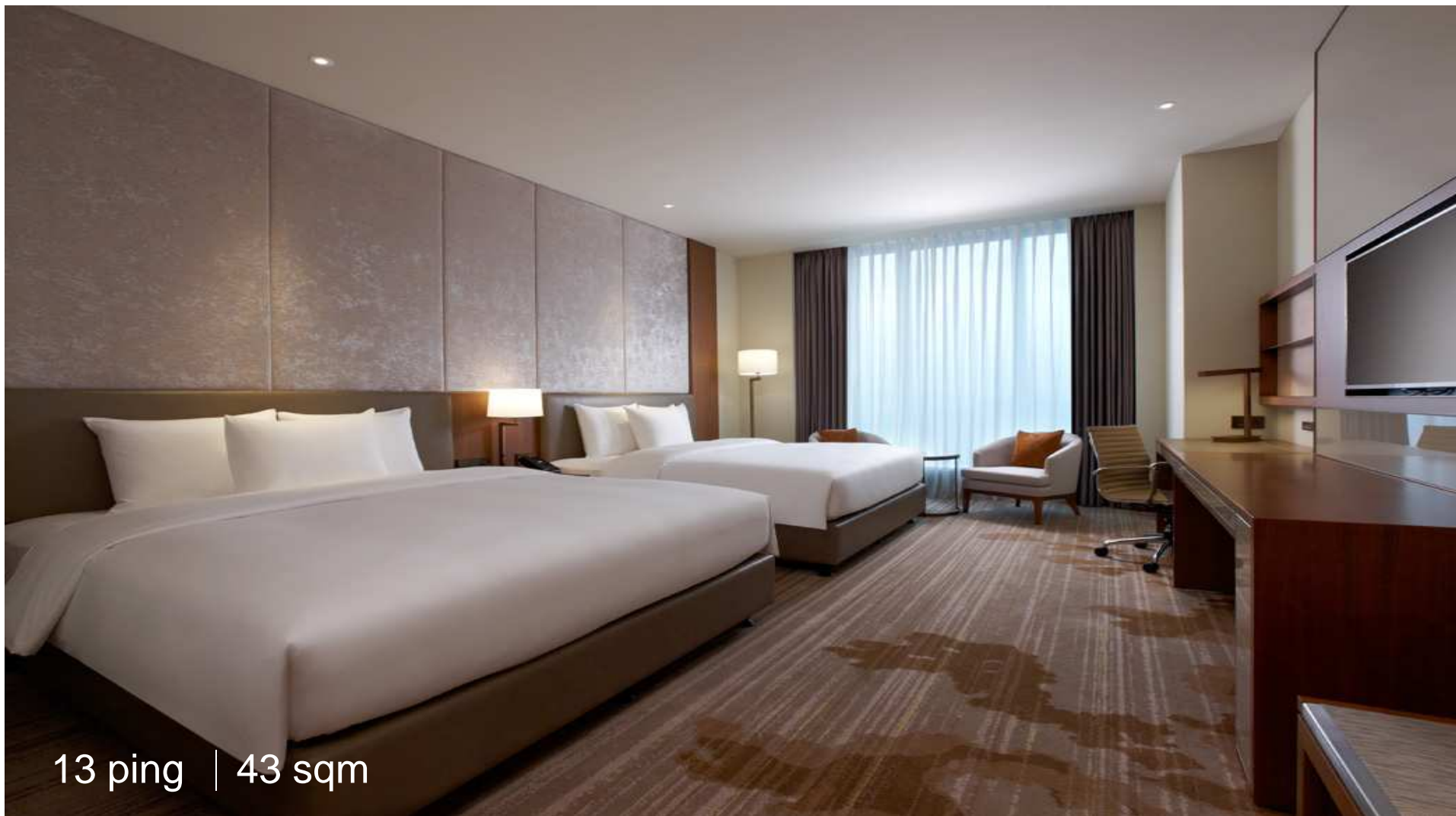
| Room Category | Room Count | Room Size (Pin) | Room Size (SQM) | Level |
|--------------------|------------|-----------------|-----------------|---------|
| Superior Room | 97 | 11 | 36 | 11F-15F |
| Deluxe Room | 244 | 13 | 43 | 16F-25F |
| Executive Room | 86 | 13 | 42 | 26F-30F |
| Junior Suite | 20 | 21 | 69 | 11F-30F |
| Deluxe Suite | 17 | 25 | 82 | 22F-30F |
| Presidential Suite | 1 | 64 | 211 | 29F |

SUPERIOR ROOM



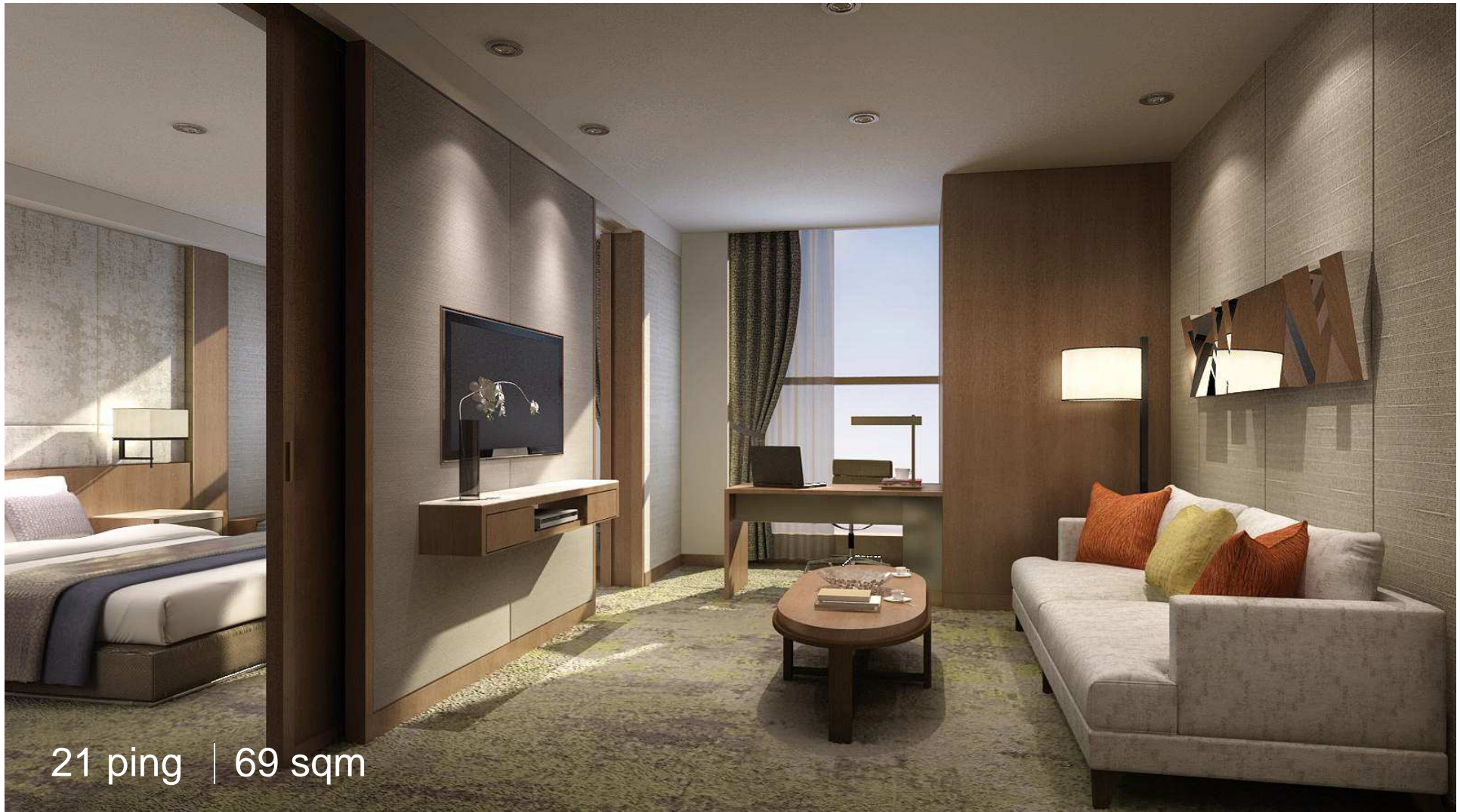
11 ping | 36 sqm

DELUXE TWIN ROOM



13 ping | 43 sqm

JUNIOR SUITE



21 ping | 69 sqm

HOTEL GYM - LEVEL 11





FOOD & BEVERAGE



SUNRISE – LEVEL 7



✧ CAPACITY

192 Seating(In-door)

56 Seating(Outside)

✧ OPERATION HOURS

Breakfast 06:30 - 10:00

Lunch 11:00 - 14:00

Afternoon Tea 14:30 - 16:30

Dinner 17:30 - 21:30

MOONLIGHT – LEVEL 8



✧ CAPACITY

Total 196 Seating

2 Private Rooms – 24 Persons/ea

2 Private Rooms – 12 Persons/ea



✧ OPERATION HOURS

Lunch 11:30 - 14:00

Dinner 17:30 - 21:00



CATERING & BANQUETING



CATERING & BANQUETING

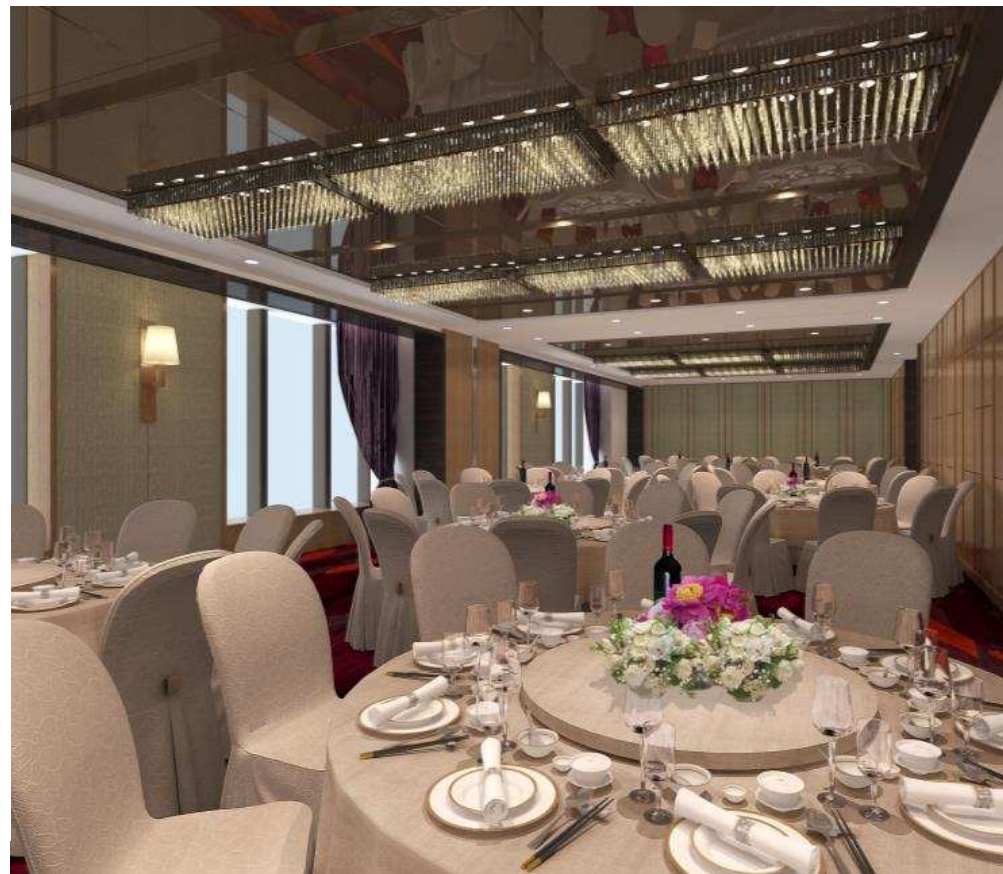
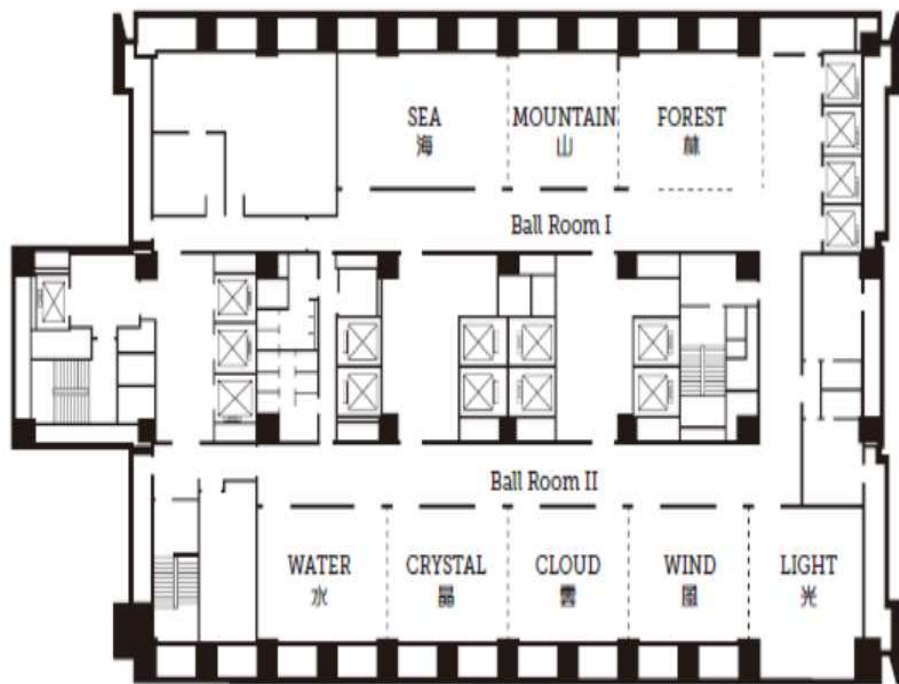
Capacity Chart

| Function Room | Room Size (Ping/SQM) | Capacity | | | Capacity Wedding (per Table) |
|---------------|-------------------------|----------|-----------|---------|------------------------------------|
| | | Theatre | Classroom | U Shape | |
| Ballroom I | 63/205 | 278 | 160 | 96 | 10 |
| Ballroom II | 91/304 | 490 | 249 | 136 | 20 |

Published Price (NT\$)

| Function Room | 08:00-12:00 / 13:00-16:30 | 18:00-22:00 | Full Day 24 Hours | 24:00 Onwards |
|---------------|------------------------------|-------------|----------------------|---------------|
| Ballroom I | 35,000 | 57,000 | 120,000 | 15,000 |
| Ballroom II | 55,000 | 80,000 | 150,000 | 18,000 |

BANQUET – LEVEL 9



OPENING

DECEMBER, 2015

